

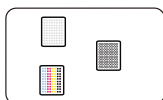
Large format Printing Machines

ORIC 6090 UV printing machine
with 2/4 Epson i3200 print heads



Technical Characteristics

EpsonI3200-U1x3



The application scheme of crystal labeling is a new technology of the digital revolution. The advantage of this new technology is that it can be directly attached to the material to be transferred after printing, which is convenient and fast without other processing

color / white+color / white+color+oil

OR-6090 UV (EpsonI3200-U1x3) Printing speed :

CMYK-pass	4.88 sqm/h
W+CMYK+V / W+CMYK-6pass	4.66 sqm/h

- OR-6090 UV is equipped with 3 original Epson I3200-U1 print heads
- The printing size is 600 mm (X) x 900 mm (Y)
- 15mm long-distance injection, breakthrough to achieve curved surface, concave and convex irregular surface inkjet printing pattern
- Optional medium thickness at 1-180 mm
- Printable flat materials, multi-product direct printing scheme and special printing scheme for crystal labeling
- Printable cylindrical materials (optional components)

Introduction to the use of crystal labels



1 Design pattern

Use photoshop, illustrator or other software to complete your design pattern and save printable mode files



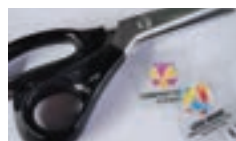
2 Print PET materials

First of all, choose the material to print directly with the printing equipment, and print white, color and light oil according to the required printing mode



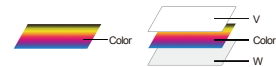
3 Transfer film

After printing, use special film coating equipment for film pressing



4 Hot melt film

Cut out the desired pattern, paste it on the prepared material, repeatedly and slowly press the pattern, and tear off the surface film



Support multi-layer printing mode



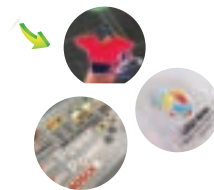
Spray heads bottom plate heating unit



1.5L ink bottle with stable ink supply and continuous output



Air cooled UV lamp curing device



TECHNICAL PARAMETER

Model		OR-6090 UV
Print Head		3 x EpsonI3200-U1
Printing Technology		Grayscale micro piezoelectric inkjet technology
Acceptable Media	Width	900x600 mm
	Thickness	1-180 mm
Resolution		2400dpi
Ink	Type	UV Ink
	Capacity	Continual Ink Supply System (1.5L ink tank)
	Color	CMYK / Lc / Lm / W
Curved surface height		Additional cylindrical fixtures
Ink Curing Unit		Dual UV LED Lamps (air-cooled Lamps)
Interface		LAN
Power Supply		AC 220V±10%, 16A , 50/60 HZ
RIP		Ripint / PhotoPrint
Machine size / weight (with bracket)		700 x 1550 x 1500 mm / 200kg
Package size / weight (with bracket)		2000 x 1650 x 900 mm / 250kg
Power		Operating status:1500W
Environment	Power on	Temperature:59F to90F [15C to 32C] (68 F [20C]/ Humidity: 35 to 80% (no condensation)
	Power off	Temperature:41F to 104 F [5C to 40C]/ Humidity: 20 to 80% (no condensation)
Accessories		USB cable, media clamp, manual, drain bottle, ink cartridges, RIP software, etc.